

***Palaemon semmelinkii* (De Man)**

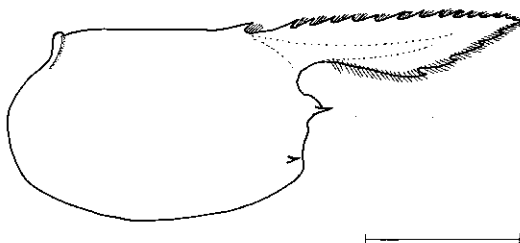
(Fig. 2)

Leander semmelinkii De Man, 1881 : 137;
Kemp 1925 : 304.1*Palaemon (Paleander) semmelinkii* - Holthuis 1950 : 59-60, Fig. 11 (Synonymy).**Material.** 1 juv., Deception Bay, Groote Eylandt, Gulf of Carpentaria, seagrass beds, trawl, 3 April, coll. R.A. Kenyon, NTM Cr. 004454; 1 ♀, Deception Bay, Groote Eylandt, Gulf of Carpentaria, trawl, 17 April 1986, coll. R.A. Kenyon, NTM Cr. 004450; 2 ♀ (1 ovig.), stn. NW2, North West Bay, Groote Eylandt, Gulf of Carpentaria, 7m, trawl, coll. R.A. Kenyon, NTM Cr. 005104.**Diagnosis.** Rostrum distinctly exceeding carapace length, without elevated basal crest, up-curved, with 7-10 dorsal and 2-5 ventral teeth, distal portion unarmed; carapace without supraorbital spines, with**Fig. 2.** *Palaemon semmelinkii* ♀ (ovig.), NTM Cr.005104, carapace and rostrum. Scale line, 3 millimetres.

antennal and submarginal branchiostegal spine, branchiostegal groove distinct anteriorly; upper antennular flagellum with fused portion shorter than free part of shorter ramus; mandible with two-segmented palp; carpus of second pereopod shorter than chela length, fingers shorter than half palm length; dactyls of ambulatory pereopods about 0.3 of propod length, propod of fifth pereopod with transverse rows of setae distolaterally.

Remarks. The single ovigerous female has a postrostral carapace length of 5.4mm, the non-ovigerous females 5.8mm and the juvenile 2.6mm. The rostral dentition is 8-9/3, with a single tooth situated on the carapace and with a long toothless distal portion of the rostrum in all specimens. The post-rostral tooth and the first four rostral teeth appear feebly but completely articulated, the next two teeth distally partly articulated, and the more distal teeth non-articulate.**Distribution.** Type locality, Makassar, Celebes, Indonesia. Also known from India, Burma, Nicobar Islands, Singapore, Sumatra, Java and Philippines.***Leandrites celebensis* (De Man)**

(Fig. 3)

Leander celebensis De Man, 1881 : 141.*Palaemonetes hornelli* Kemp, 1925 : 318, Figs 14-15.*Leandrites celebensis* - Holthuis 1950 : 36-37 (Synonymy).**Material.** 5 spms., Drimmie Creek, Gove, scoop, security pond, mud samples, 1 April 1971, N.T. Fisheries Division, NTM Cr.000893; 2 ovig. ♀, 1 ♂, stn. HL 84-12, Woods Inlet, Darwin Harbour, 2m, mangrove run-off, rotenone, 16 March 1984, coll. H.K. Larson, NTM Cr. 002090; 1 ♂, #1182, Groote Eylandt, salt lake (temp. 32.4°C, salinity 37.9 o/oo), 2.7m, 3 December 1984, coll. R.A. Kenyon, NTM Cr. 003321; 1 ♂, 3 ♀, 6 ovig. ♀, #5176, Myoola Bay, Groote Eylandt, 1.5m, (temp. 36.6°C, salinity 36.7 o/oo), 16 December 1984, coll. R.A. Kenyon, NTM Cr. 003331; 1 ovig. ♀, Deception Bay, Groote Eylandt, seagrass beds, trawl, 19 February 1986, coll. R.A. Kenyon, NTM Cr. 005101; 2 ♀, Deception Bay, Groote Eylandt, seagrass beds, trawl, 3 April 1986, coll. R.A. Kenyon, NTM Cr. 004453; 1 ♀, Deception Bay, Groote Eylandt, trawl, 17 April 1986, coll. R.A. Kenyon, NTM Cr. 004451; 1 ♀, stn. NW2, North West Bay, Groote Eylandt, 7m (temp. 30.5°C salinity 34.8o/oo), trawl, coll. R.A. Kenyon, NTM Cr. 005105.**Fig. 3.** *Leandrites celebensis* ♀ (ovig.), NTM Cr.003109, carapace and rostrum. Scale line, 3 millimetres.**Diagnosis.** Rostrum subequal to carapace length, without elevated basal crest, with 13-17 dorsal and 3-5 ventral teeth, first two